



H  
A  
T  
C  
O

G  
U  
L  
F  
F  
A  
B



### Electro Mechanical & Civil

**Husain Hadi Atwah Gen. Cont. Est**  
 Abu Ali Street, P.O Box 1316  
 Al Jubail: 31951  
 Kingdom of Saudi Arabia  
 Tele: (013) 361 8418  
 Fax: (013) 361 8402

Email: [Info@hatcogroups.com](mailto:Info@hatcogroups.com)  
 Web: [www.hatcogroups.com](http://www.hatcogroups.com)

### Metal Fabrication

**Gulf Fabrication Factory For Industry**  
 Royal commission,  
 3<sup>rd</sup> Support Ind Area, Al Jubail: 31951  
 Kingdom of Saudi Arabia  
 Tele: (013) 340 8120  
 Fax: (013) 361 8402

Email: [Info@hatcogroups.com](mailto:Info@hatcogroups.com)  
 Web: [www.hatcogroups.com](http://www.hatcogroups.com)



## INDEX

S.No	Description	Index No.
1	Introduction	3
2	About us	4
3	Our Valuable Vendors	5-6
4	Affiliated Company Chart	7
5	Company Organization Chart	8
6	ISO Certifications HATCO	9
7	ISO Certifications & ASME Certification (GULFAB ) (‘R’, ‘U’, ‘S’ & ‘PP’ Stamps)	10-12
8	Nature of Business	13-15
9	Control and Instrumentation Division	16
10	Electrical Division	17
11	Rotating Equipment Maintenance Service	18
12	Fabrication Division (Anchor Bolts)	19
13	HVAC Division	20
14	Equipment Profile	22-23
15	Supplementary Information	24
16	Safety Policy Statement	25-26
17	Projects/Clients	27-49
18	Our Affiliations	50-62
19	Location Map	63-64

## INTRODUCTION

**Husain H. Al - Atwah Gen. Cont. Est. (HATCO)** An ISO 9001-2015 company was formed in 2001 as a construction company providing **Construction Contracting Services** and **Turnkey** solutions. Through the company's diversified knowledge and experience, it engages in a wide spectrum of construction services such as Mechanical, Electrical, Control & Instrumentation and Civil work. HATCO serves a wide range of clients varying from Oil and Gas, Petrochemical & Utility Sector and Private Plant.

HATCO is well managed by a highly professional and qualified team, whose main objective is to achieve excellence and to exceed client expectations in related projects.

We can provide our clients with a full range of value-added services and products.

## VISION

Our Vision is to position HATCO as one of the Local Leaders in the field of Electromechanical works and is committed to delivering superior services, quality products and fine innovative solutions to our Clients.

## MISSION

To provide the highest level of service in Design, Engineering Installation & Commissioning in Mechanical, Electrical, Control and Instrumentation works while caring for our customers, employees and the environment. We strive to deliver innovative designs and tailored solutions based on the needs of our customers. We strictly adhere to our safety guidelines and work hard to provide a quality product, on time, and under budget.



## ABOUT US

■ **HATCO** is engaged in Electro-Mechanical services for different reputed companies.

■ **LOCATION:** - We are located in Abu Ali Street, Near Toyota, Jubail ( <http://goo.gl/maps/mE26M> ). This enables us more efficient and prominent in dealing with the requirements of our clients in a short time.

■ **MANAGEMENT:** - We have very good management supported by efficient and skilled marketing, operations and maintenance departments and we are capable of timely execution of any assignments successfully.

## OBJECTIVE

The aim of setting up this project is to achieve technological excellence in the Design, Engineering, and Manufacturing of various works in Electro-Mechanical, Instrumentation along with Manufacturing of Process Tanks, Heavy & Medium Structures, piping work, Custom process equipment, General maintenance, Shutdown / Turnaround & Maintenance activities and Civil works also forms an integral part of the set-up.

## OUR AFFILIATIONS:

■ **Gulf Fabrication Factory For Industry. (GULFAB)**

(For Metal Fabrication and Coating)

■ **Husain Hadi Atwah workshop (Jubail Branch)**

(For Mechanical Seals, Pumps, Valves & Turning Job)

■ **Super Industries (Yanbu Branch)**

(Pumps and Mechanical Seal)



## OUR VALUABLE VENDORS:

SAUDI ARAMCO HATCO/GULFAB

Vendor No.: 10042926/10114129



SABIC

Vendor No.: 0000506708



TASNEE

Vendor No.: 103569



GE POWER

Vendor No.: 10748905



SAUDI ELECTRICITY COMPANY

Vendor No.: 0005014067



MAA'DEN

Vendor No.: 38632



CHEMNOL:

Vendor No.: 01150



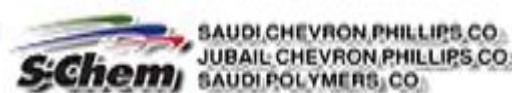
SIPCHEM :

Vendor No.: 101551



S-CHEM:

Vendor No.: 138407



NESMA:

Vendor No.: 27632



SADARA:

Vendor No.: 1000004884



SAIPEM:

Vendor No.: 100196556

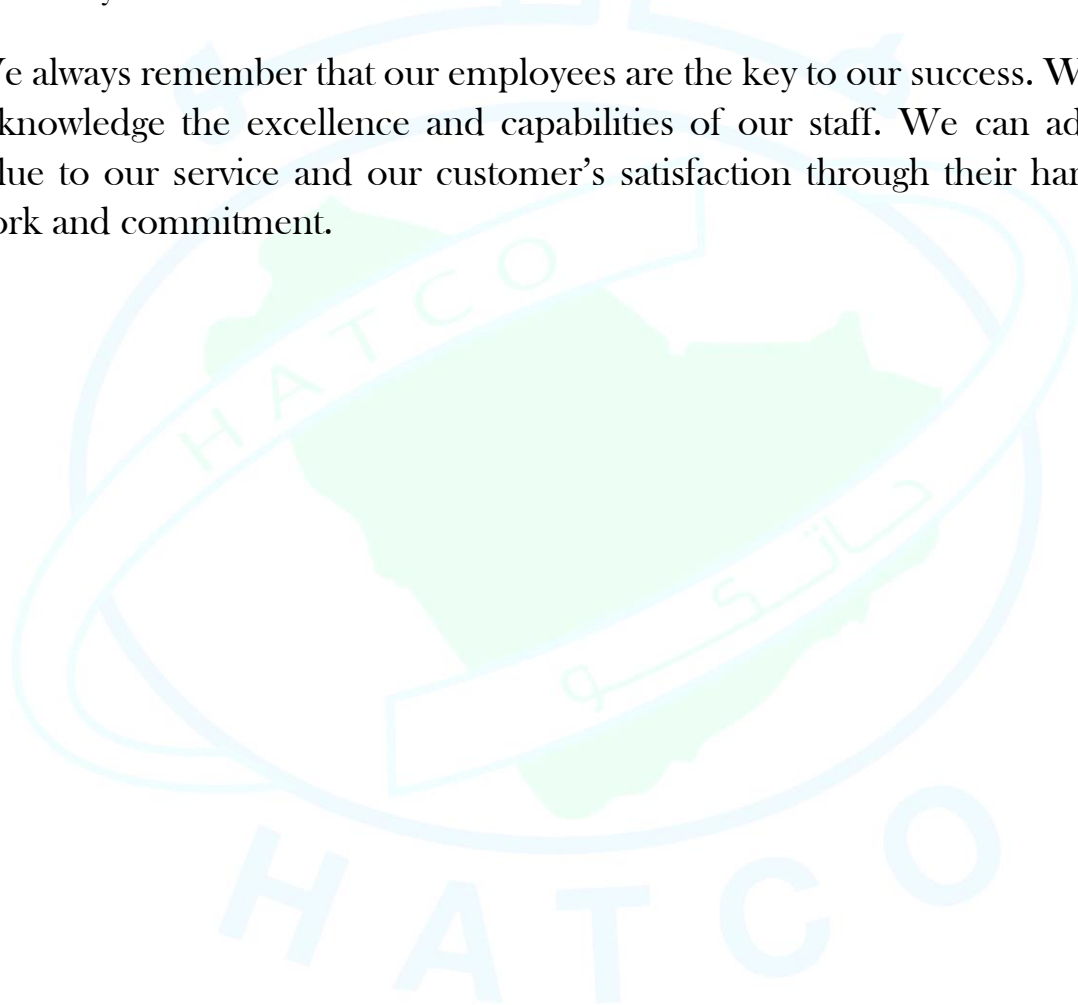


## STAFF ORGANIZATION

**HATCO** is comprised of more than 300 personnel of young energetic dedicated and well-experienced people with excellent knowledge of industrial products and services.

Our staff are our greatest asset. Considering the abilities of our staff we assign them to the right task and right environment. This is our assurance of maximum efficiency and productivity. We built our reputation through the timely and efficient work of our staff which our clients have benefited.

We always remember that our employees are the key to our success. We acknowledge the excellence and capabilities of our staff. We can add value to our service and our customer's satisfaction through their hard work and commitment.



## HUSAIN HADI ATWAH GEN. CONTR. EST (HATCO)

### AFFILIATED COMPANY



**HUSAIN H. ATWAH GENERAL  
CONTRACTING  
ESTABLISHMENT  
(HATCO) CR#: 2055005240**

#### Contracting

Mechanical works Electrical works  
Industrial Maintenance  
HVAC System Servicing  
Civil Works



**GULF FABRICATION FACTORY  
FOR INDUSTRY (GULFAB)  
For Metal Fabrication & Coating  
CR#: 2055009494**

#### Steel Fabrication

Tank & Vessels  
Heavy / Light Steel Structure  
Proses Equipment & Steel Structure  
HVAC Duct Fabrication and Repairs



**HUSAIN H. ATWAH  
WORKSHOP  
For Mechanical Seals  
CR#: 2055008543 (JUBAIL)**

#### Industrial Supplier

Mechanical Seals & Pumps  
Chemical Process Pumps  
Valves , Turnery  
Spare Parts



**SUPER INDUSTRIES  
Pumps & Mechanical Seal  
CR#: 4700117191 (YANBU)**

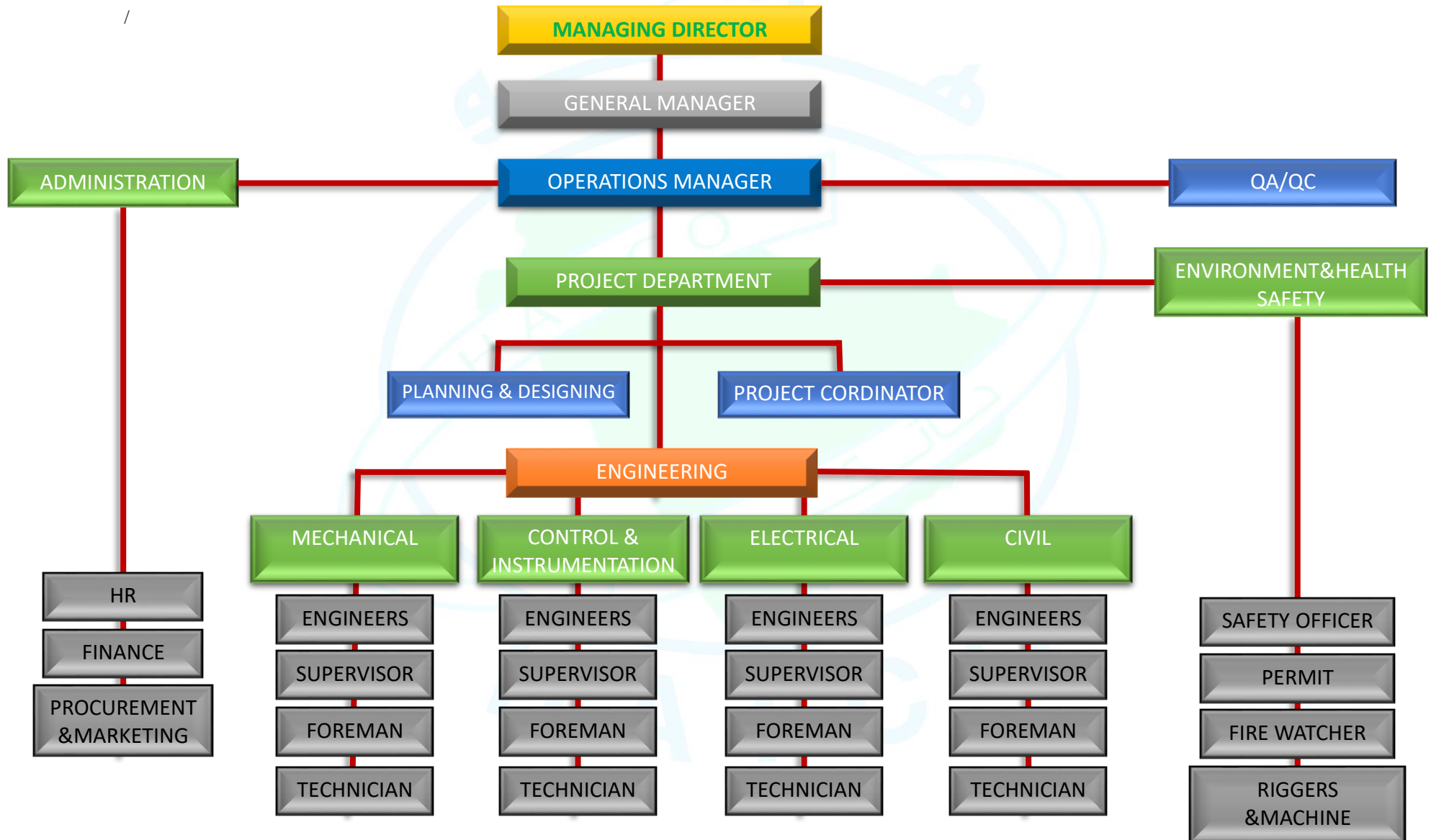
#### Industrial Supplier

Mechanical Seals & Pumps  
Chemical Process Pumps  
Valves , Turnery  
Spare Parts



## HUSAIN ATWAH GEN. CONTR. EST (HATCO)

### ORGANIZATION CHART



# ISO 9001:2015

## HATCO

# ISO 45001:2018

  
**Certificate of Registration**  
Certificate No: 190911016621

This is to Certify that the Quality Management System of  
**Husain H. Atwah Gen. Cont. Est.**  
Near Toyota, Abu Ali Street, P.O Box 1316, Al Jubail 31951 – Kingdom of Saudi Arabia  
has been assessed and found to be in accordance with the requirements of  
standard detailed below

**ISO 9001:2015**  
This Certificate is valid for the following scope  
Providing Contracting Services  
(Civil, Electrical, Mechanical & Instrumentation)  
(IAF Group-28)

Initial Registration Date	11 <sup>th</sup> Sep. 2019	Current Issue Date	18 <sup>th</sup> Oct. 2022
1 <sup>st</sup> Surveillance on or before	Completed	Valid Until	10 <sup>th</sup> Sep. 2025
2 <sup>nd</sup> Surveillance on or before	Completed	Issue no. Revision	02 00

Certification Cycle of this certificate is three (3) years from the issue date and validity of the certificate shall be subject to the successful completion of the surveillance audit as mentioned above, current Status of Certificate can be verified on  
i.e. [www.isoindia.org](http://www.isoindia.org) & [www.iafcertsearch.org](http://www.iafcertsearch.org)

   
CB-MS-2207

Pragayesh Singh  
TNV Certification Pvt Ltd  
CIN: U74900UP2011PTC046719  
Accredited by United Accreditation Foundation (UAF)

Accreditation Board Add: United Accreditation Foundation Inc, 409 North Center Dr Ste 202, Norfolk, Va 23502, United States of America

Certification Body Add: H.O.: TNV House, 537-B/187-B, Amber Vihar, Lucknow-20, India, Mail: [info@isoindia.org](mailto:info@isoindia.org)

\* Validity of the certificate is subject to continuous compliance of the management system and successful completion of audit as directed by TNV from time to time. Further clarification regarding the scope of this certificate and the applicability of standard may be obtained by consulting the organization. This certificate remains property of the TNV and must be returned on request. For surveillance details, please visit [www.isoindia.org](http://www.isoindia.org) or [www.iafcertsearch.org](http://www.iafcertsearch.org)

  
**Certificate of Registration**  
Certificate No: 231201036601

This is to Certify that the Occupational Health and Safety Management System of  
**Husain H. Atwah Gen. Cont. Est.**  
Near Toyota, Abu Ali Street, P.O Box 1316, Al Jubail 31951,  
Kingdom of Saudi Arabia  
has been assessed and found to be in accordance with the requirements of  
standard detailed below

**ISO 45001:2018**  
This Certificate is valid for the following scope  
Providing Contracting Services  
(Civil, Electrical, Mechanical & Instrumentation)  
(IAF Group- 28)

Initial Registration Date	01 <sup>st</sup> Dec. 2023	Current Issue Date	01 <sup>st</sup> Dec. 2023
1 <sup>st</sup> Surveillance on or before	01 <sup>st</sup> Nov. 2024	Validity of this certificate	30 <sup>th</sup> Nov. 2024
2 <sup>nd</sup> Surveillance on or before	01 <sup>st</sup> Nov. 2025	Recertification due on	30 <sup>th</sup> Nov. 2026

Certification Cycle of this certificate is three (3) years from the issue date and validity of the certificate shall be subject to the successful completion of the surveillance audit as mentioned above, current status of the certificate can be verified on  
i.e. [www.isoindia.org](http://www.isoindia.org) & [www.iafcertsearch.org](http://www.iafcertsearch.org)

   
CB-MS-2208

Pragayesh Singh  
TNV Certification Pvt Ltd  
CIN: U74900UP2011PTC046719  
Accredited by United Accreditation Foundation (UAF)

Accreditation Board Add: United Accreditation Foundation Inc, 409 North Center Dr Ste 202, Norfolk, Va 23502, United States of America

Certification Body Add: H.O.: TNV House, 537-B/187-B Amber Vihar, Lucknow-20, India, Mail: [info@isoindia.org](mailto:info@isoindia.org)

\* Validity of the certificate is subject to continuous compliance of the management system and successful completion of audit as directed by TNV from time to time. Further clarification regarding the scope of this certificate and the applicability of standard may be obtained by consulting the organization. This certificate remains property of the TNV and must be returned on request. For surveillance details, please visit [www.isoindia.org](http://www.isoindia.org) or [www.iafcertsearch.org](http://www.iafcertsearch.org)



# ISO 9001:2015

## GULFAB

# ISO 45001-2018



## Certificate of Registration

Certificate No: 211214016601

This is to Certify that the Quality Management System of

**Gulf Fabrication Factory for Industry**

Royal Commission, P.O Box 37317, 3rd Support Ind. Area, Al-Jubail 31961 – Kingdom of Saudi Arabia

has been assessed and found to be in accordance with the requirements of standard detailed below

### ISO 9001:2015

This Certificate is valid for the following scope

Providing Metal Fabrication, Manufacturing and Repair  
of Pressure Vessels & Boilers, Dish Forming, Pipe Fabrication  
(IAF Group-17)

Initial Registration Date	09 <sup>th</sup> Sep. 2019	Current Issue Date	19 <sup>th</sup> Oct. 2022
1 <sup>st</sup> Surveillance on or before	Completed	Valid Until	08 <sup>th</sup> Sep. 2025
2 <sup>nd</sup> Surveillance on or before	Completed	Issue no.	02
		Revision	00

Certification Cycle of this certificate is three (3) years from the issue date and validity of the certificate shall be subject to the successfully completion of the surveillance audit as mentioned above, current Status of Certificate can be verified on  
i.e. [www.isoindia.org](http://www.isoindia.org) & [www.iafcertsearch.org](http://www.iafcertsearch.org)



TNV Certified  
CIN: U74900UP20  
Accredited by United Ac  
Founda

Pragyesh Singh

Accreditation Board Add: United Accreditation Foundation Inc, 400 North Center Dr Ste 202, Norfolk, Va 23502, United States of America

Certification Body Add, H.O: TNV House, 537-B/187-B, Amber Vihar, Lucknow-20 India. Mail: [info@isoindia.org](mailto:info@isoindia.org)

\* Validity of this certificate is subject to continuous compliance of the management system standards and successful completion of audit as per ISO 9001:2015. After certification, regarding the scope of this certificate and the status obtained by completing the registration. This certificate remains property of the TNV and must be returned or required. For surveillance details, please visit at [www.isoindia.org](http://www.isoindia.org). Regd. office of the TNV is TNV House, B-9/18/80, Sector-8, Gurgaon.



## Certificate of Registration

Certificate No: 211214036601

This is to Certify that the Occupational health and safety management systems of

**Gulf Fabrication Factory for Industry**

Royal Commission, P.O Box 37317, 3rd Support Ind. Area, Al-Jubail 31961 – Kingdom of Saudi Arabia

has been assessed and found to be in accordance with the requirements of standard detailed below

### ISO 45001:2018

This Certificate is valid for the following scope

Providing Metal Fabrication, Manufacturing and Repair  
of Pressure Vessels & Boilers, Dish Forming, Pipe Fabrication  
(IAF Group-17)

Initial Registration Date	09 <sup>th</sup> Sep. 2019	Current Issue Date	19 <sup>th</sup> Oct. 2022
1 <sup>st</sup> Surveillance on or before	Completed	Valid Until	08 <sup>th</sup> Sep. 2025
2 <sup>nd</sup> Surveillance on or before	Completed	Issue no.	02
		Revision	00

Certification Cycle of this certificate is three (3) years from the issue date and validity of the certificate shall be subject to the successfully completion of the surveillance audit as mentioned above, current Status of Certificate can be verified on  
i.e. [www.isoindia.org](http://www.isoindia.org) & [www.iafcertsearch.org](http://www.iafcertsearch.org)



Pragyesh Singh  
TNV Certification Pvt Ltd  
CIN: U74900UP2011PXC046719  
Accredited by United Accreditation  
Foundation (UAF)

Accreditation Board Add: United Accreditation Foundation Inc, 400 North Center Dr Ste 202, Norfolk, Va 23502, United States of America

Certification Body Add, H.O: TNV House, 537-B/187-B, Amber Vihar, Lucknow-20 India. Mail: [info@isoindia.org](mailto:info@isoindia.org)

\* Validity of this certificate is subject to continuous compliance of the management system standards and successful completion of audit as per ISO 45001:2018. After certification, regarding the scope of this certificate and the status obtained by completing the registration. This certificate remains property of the TNV and must be returned or required. For surveillance details, please visit at [www.isoindia.org](http://www.isoindia.org). Regd. office of the TNV is TNV House, B-9/18/80, Sector-8, Gurgaon.



**THE NATIONAL BOARD  
OF  
BOILER & PRESSURE VESSEL INSPECTORS**

***Certificate of Authorization***



*This is to certify that*

**GULF FABRICATION FACTORY FOR INDUSTRY**

**Unit 1, Rd 106**

**3rd Support Industrial Area**

**Royal Commission Jubail**

**Al Jubail 35729**

**Saudi Arabia**

**Acceptable Abbreviation: GULFAB**

*is authorized to use the R Symbol in accordance with the provisions of the National Board Inspection Code and NB-415, Accreditation of "R" Repair Organizations.*

All activities within the scope of this Authorization shall be controlled by the above location.

The scope of this Authorization is limited to:

**Metallic  
Repairs and Alterations  
At  
Shop and Field Locations**

Certification Number:

**12122**

Issue Date:

**January 18, 2023**

Expiration Date:

**January 17, 2026**

Executive Director



**CERTIFICATE OF  
AUTHORIZATION**

The named company is authorized by The American Society of Mechanical Engineers (ASME) for the scope of activity shown below in accordance with the applicable rules of the ASME Boiler and Pressure Vessel Code. The use of the ASME Single Certification Mark and the authority granted by this Certificate of Authorization are subject to the provisions of the agreement set forth in the application. Any construction stamped with the ASME Single Certification Mark shall have been built strictly in accordance with the provisions of the ASME Boiler and Pressure Vessel Code.

COMPANY:

**GULF FABRICATION FACTORY FOR INDUSTRY**

**Unit 1, Rd 106**

**3rd Support Industrial Area**

**Royal Commission Jubail**

**Al Jubail 35729**

**Saudi Arabia**

SCOPE:

**Fabrication and assembly of pressure piping at the above location and field sites controlled by the above location**

AUTHORIZED: **January 15, 2023**

EXPIRES: **January 15, 2026**

CERTIFICATE NUMBER: **60606**

Board Chair, Conformity Assessment

Managing Director, Standards & Engineering Services

**The American Society of Mechanical Engineers**





## CERTIFICATE OF AUTHORIZATION

The named company is authorized by The American Society of Mechanical Engineers (ASME) for the scope of activity shown below in accordance with the applicable rules of the ASME Boiler and Pressure Vessel Code. The use of the ASME Single Certification Mark and the authority granted by this Certificate of Authorization are subject to the provisions of the agreement set forth in the application. Any construction stamped with the ASME Single Certification Mark shall have been built strictly in accordance with the provisions of the ASME Boiler and Pressure Vessel Code.

**COMPANY:**

**GULF FABRICATION FACTORY FOR INDUSTRY**  
Unit 1, Rd 106  
3rd Support Industrial Area  
Royal Commission Jubail  
Al Jubail 35729  
Saudi Arabia

**SCOPE:**

Manufacture and assembly of power boilers at the above location and field sites controlled by the above location

**AUTHORIZED:** January 15, 2023

**EXPIRES:** January 15, 2026

**CERTIFICATE NUMBER:** 60607

Board Chair, Conformity Assessment

Managing Director, Standards & Engineering Services



## CERTIFICATE OF AUTHORIZATION

The named company is authorized by The American Society of Mechanical Engineers (ASME) for the scope of activity shown below in accordance with the applicable rules of the ASME Boiler and Pressure Vessel Code. The use of the ASME Single Certification Mark and the authority granted by this Certificate of Authorization are subject to the provisions of the agreement set forth in the application. Any construction stamped with the ASME Single Certification Mark shall have been built strictly in accordance with the provisions of the ASME Boiler and Pressure Vessel Code.

**COMPANY:**

**GULF FABRICATION FACTORY FOR INDUSTRY**  
Unit 1, Rd 106  
3rd Support Industrial Area  
Royal Commission Jubail  
Al Jubail 35729  
Saudi Arabia

**SCOPE:**

Manufacture of pressure vessels at the above location and field sites controlled by the above location (This authorization does not cover impregnated graphite)

**AUTHORIZED:** January 15, 2023

**EXPIRES:** January 15, 2026

**CERTIFICATE NUMBER:** 60608

Board Chair, Conformity Assessment

Managing Director, Standards & Engineering Services



## NATURE OF BUSINESS

### Industrial Division

- Mechanical Works
- Fabrication, Erection & Commissioning
- Electrical Work
- Control and Instrumentation Works
- Industrial Maintenance
- HVAC System Servicing
- Insulation & Cladding

### Fabrication Division:

- Low and Medium Pressure Vessels
- Process Tanks
- Storage Tanks
- Fabrication of Dish Heads Max Thickness 120mm (Hemispherical and Ellipsoidal)
- Super Structure for Process Tanks and Equipment's.
- Chimney Stack & Structures.
- Platform, Handrails & Grating
- Pipe Rack Structure
- Process Plant Piping CS & SS (Liquid and Gas lines)
- RF Pads for Pipe support and Nozzles.
- Pipe Spools, Pipe Clamps, Pipe trunnion support
- Incinerator Processing Equipment, Baghouse & Structure
- Aluminum Silos
- SS and CS Hooper's
- SS Cable tray
- Process Plant Air Ducts
- HVAC Duct Fabrication

### Maintenance Division: -

- Short Term Service
- Long Term Services
- Rotating Equipment Maintenance Service

### Supply Division: -

- Industrial Spare Parts (Mechanical Seals & Super Flow Pumps) Oil Seal Local & Overseas Equipments.



## Electrical & Instrumentations

- Design Installation and Commissioning of Control Panels
- Installation and Configuration of Instruments (E&H, Rosemount & Siemens)
- Installation Transformers & Switchgear
- Power Panels & MCC Installation
- HV and LV Motor Installation
- Lighting System (Explosion proof type)
- Grounding & Lightning Arresters
- Fire Alarm Control System.
- Process, Controls & Measuring System
- Fiber Optic Cable Networks
- Telecommunication.

## Civil:

- Earth filling & Compaction
- Equipment Foundations
- Cable Trenching
- Plant Demolition & Maintenance

### Construction Management:

- Construction planning & Scheduling.
- Quality Control.
- Safety Measures Control.
- Site Administration, Engineering, Supervision & Labor control.

### Engineering details:

- Mechanical / Piping & HVAC.
- Electrical / Instrumentation / Control System.

### Project Management:

- Project Planning & Schedule.
- Project Admin, Coordination & Documentation.
- Quality Control.
- Materials Control.
- Cost / Man-hour Control.
- Reporting System & Progress Measurement

### Procurement

- Supplier Communication
- Cost Analysis,
- Logistics and performance Management
- Supplier Management and Liaison
- Quality Assurance.

## CONTROL AND INSTRUMENTATION DIVISION

The scope of work covers all the activities starting from the feasibility study, engineering, supply of automation equipment, installation, testing & commissioning up to system hand over.

### CAPABILITIES

- Front End Engineering Design
- Feasibility study for Technology Migration Implementation for obsolete plant system
- PLC Systems & Networking (Siemens S7400H, S7300, Rockwell Control Logix and Compact Logix, Schneider Electric M340 & M580 PLC's)
- SCADA & HMI Design and Integration (WinCC, TIA Portal, Factory Talk View ME&SE, Vejo Designer).
- Development of FDS, Instrumentation Engineering including Operational & Control Philosophy
- Preparation of panel diagrams, wiring diagrams, Hook up diagrams, Loop diagrams, Interconnection diagrams, cable layout & lists etc.
- PLC software development, Logic Preparation
- Factory Acceptance Test, Installation, Testing & Commissioning procedures, Site Acceptance Test.
- Electrical, Control & Instrumentation, Installation & Commissioning.
- As built drawings.

HATCO is deeply committed in close working relationship, to ensure a complete understanding of client's requirements, ensuring that the engineered solution uses the latest technology available.



## **ELECTRICAL DIVISION**

HATCO provides premier electrical contracting and maintenance for private and public sector in commercial industrial markets throughout the Eastern Province

Our electrical services include project management, design, supply, installation, testing plus commissioning and maintenance of electrical systems.

Our Electrical Division places a great emphasis on its relationship with clients, private or commercial, and pride ourselves on the ability to respond to your contracting requirements in an efficient and cost effective way

### **CAPABILITIES**

#### **1. Electrical Installation**

- Installation of Control Panels, Switchgear and Motor Control Centers
- Installation of H2 Generators
- Supply and Installation of Cable Management System (Ladder, Trays, Trunking, Conduits, Covers and Accessories.)
- Installation of Lighting, Emergency Lighting and External Lighting
- Medium Voltage and High Voltage Termination

#### **2. Electrical Testing and Inspection**

- Calibration and Instrumentation Services
- Refurbishment
- Modification and Upgrading Electrical System
- Testing and Commissioning of Electrical Equipment's at site
- Insulation Resistance Test.

## **ROTATING EQUIPMENT MAINTENANCE SERVICE**

We bring world class maintenance experts to work on your machine, maximize its operability and maintainability by the best practice and innovative ideas.

- Compressors and Turbines:

### **Scope includes:**

- Inspection, maintenance, repair, modification and complete overhaul
- Root cause analysis and sustainable solutions
- Vibration measurement, lubrication, balancing and cleaning
- Inspection, maintenance, repair and modification of ancillary equipment

### **Pumps:**

### **Scope includes:**

- First line maintenance
- Pump maintenance, repair and overhaul, at repair shop and at customer site
- Condition monitoring
- Quick response on urgent needs as maintenance team is available close to the industrial area.
- Assembly unit for different types of centrifugal pumps.
- Machine shop with adequate facility for spare parts repair.

## **BOILER EQUIPMENT MAINTENANCE SERVICE**

### **1. Boiler Maintenance Service:**

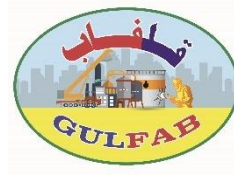
We can serve clients as a turnkey service provider for Boiler maintenance and repairs and can provide the best practices and innovative solution to help maintaining and improving the performance of boilers.

#### **Scope includes:**

- Boiler inspections
- Boiler overhaul
- Boiler modifications as per engineering standards and client requirements
- Efficiency and performance studies
- Root Cause Failure Analysis
- Residual Life Assessment (RLA)
- Planned turnkey maintenance
- Cleaning
- Re-tubing

## **FABRICATION DIVISION**

### **GULF FABRICATION FOR INDUSTRY(GULFAB)**



Quality is embedded in the service with strictly managed and monitored production processes applied at every stage. Our fabrication and Coating division already settled in a high standard.

We are warmly greeting our customers throughout the GCC with our high-quality products, good credit and the best services.

### **CAPABILITIES**

- **Fabrication and Installation of Carbon Steel and Stainless Steel - Vessels**
  - Process Tanks • Storage Tanks • Process Equipment's • Dish Head ( Hemispherical and Ellipsoidal )
- **Stainless Steel and Carbon Steel Piping Works;** • Pressure Line • Chemical Lines • Air Lines & Air Ducts
- **Fabrication and Installation of Heavy and medium Steel Structure.**
- **Fabrication and Installation of Heavy and Medium Equipment Foundation.**
- **Fabrication of Anchor bolts and the details are as follows;**
  - Straight Anchor Bolt one end threaded or both end threaded.
  - J-Type Anchor bolt.
  - Nut welded Anchor Bolts.
  - L-Type Anchor Bolt 90°, 120°, 135°
  - Chemical Anchor also full threaded Stud with one end having 45° cutting

#### **SIZE :**

Nom Dia: 1" to 4" [M12-M100] \*Tailor made if required.

Length: As Per Standard or Upto any Length

**SPECIFICATION / STANDARD** :ASTM / ASME / BS / DIN / BS EN ISO

**MATERIAL** :C.S., M.S., Alloy Steel, Ferritic & Austenitic Stainless Steel

**THREADS** :UNC, 8UN, UNF, Metric Coarse & Fine Series

**SURFACE FINISH** :Self Color, Hot Dip Galvanized, Electro Galvanized, or any other as per order requirement

- **Insinator                      System                      • Combustion                      Chamber                      • Coolers**
  - Super Structure • Stacks • Baghouse • Chimney Stack Structure.
- **Machining:** Turning, Milling, Shaping, Bending, Rolling and Drilling.
- **Specialized in Expansion Bellow** Metallic and Fabrics Replacement Jobs specified by SF Pathway.



## HVAC DIVISION:

HATCO engineers and technicians are available to carry out all sites HVAC works including surveys, commissioning, installation and supervision on systems supplied by others. Please contact our engineering/sales department for a complete quotation covering all aspects of your HVAC requirements.

### CAPABILITIES

- Surveys and Inspection
- Supply and installation
- We can install a whole new industrial HVAC system based on customer requirements which includes fabrication of duct and other related accessories
- HVAC System Commissioning and Air Balancing
- Maintenance of existing HVAC system.
- We offer a comprehensive ad-hoc repair, refurbishment and maintenance services from filter clean to a planned maintenance programs.
- Duct and Equipment Leakage Testing

## EQUIPMENT'S PROFILE

Our wide range of machineries and equipment's has given much enhanced execution of our projects and more savings not only in time but in workforce as well, resulting into a much satisfied and gratified clients.

	Description
1	<b>FABRICATION EQUIPMENTS PROFILE</b> <ul style="list-style-type: none"><li>• <b>Laser Profile Cutting Machine</b> – (400mmx 400mm x 12meter long )</li><li>• <b>Plasma Cutting Machine CNC</b> (Bed Size 12 x 3 mtr, cutting thickness 150mm CS)</li><li>• Plasma Cutting Machine CNC (Bed Size 3 x 3 mtr, cutting thickness 45mm CS)</li><li>• <b>3000Ton Hydraulic Press Machine</b></li><li>• <b>1500Ton Hydraulic Press Machine</b></li><li>• 160Ton Hydraulic Press Machine</li><li>• Shearing Machines Heavy duty CNC</li><li>• Rolling Machines Heavy duty CNC</li><li>• Bending Machines Heavy Duty CNC</li><li>• Overhead Crane 10 Ton Capacity 2nos</li><li>• Overhead Crane 5 Ton Capacity 2nos</li><li>• Overhead Crane 3 Ton Capacity 1nos</li><li>• Lathe Machines CNC</li><li>• Milling Machine CNC (Victory 360L Bed Size 1600x360mm)</li><li>• Band saw Machines, Heavy, Medium &amp; Small</li><li>• Pipe Beveling Machines Heavy Duty</li><li>• Plate Beveling Machines Heavy Duty</li><li>• Pipe Notching Machines Heavy Duty</li><li>• Pipe and Rod Threading Machines Heavy Duty</li><li>• Power Generators.</li><li>• Welding Generators (Miller, Lincoln Brand)</li><li>• Electrical Welding Machines (Miller, Esab &amp; Lincoln) Heavy Duty</li><li>• Plasma Welding Machines</li><li>• MIG Welding Machines.</li><li>• Aluminum Welding Machines</li><li>• Concreate Cutting Machines and Coring Machine (Hilti Brand) Heavy Duty</li><li>• Jack Hammers, Heavy and medium Types</li><li>• Air Compressors.</li><li>• Pipe Gas Cutter.</li><li>• Gas Cutting Machines</li></ul>

	<ul style="list-style-type: none"> <li>• <b>Airless Type Painting Machine.</b></li> <li>• Magnetic Drilling Machines.</li> <li>• High Speed Cutters.</li> <li>• Hydraulic Jacks Heavy Duty 110 Ton. (2 Nos)</li> <li>• Hydraulic Jacks Medium and Small</li> </ul>
2	<b>VEHICLE PROFILE</b> <ul style="list-style-type: none"> <li>• Mobile Crane 60 Ton Capacity</li> <li>• Boom Truck 15 Ton Capacity</li> <li>• Man lifts 80 feet Capacity</li> <li>• Scissor Lift 15 Meters</li> <li>• Fork Lift 10T, 8T, 5T</li> <li>• Trailers</li> <li>• Small Trucks</li> <li>• Bus 50 Seaters - 3nos</li> <li>• Bus 35 Seaters – 2nos</li> <li>• Min Van 15 Seater – 2nos</li> <li>• CAT – Loader</li> <li>• JCB - Backhoe Loader</li> </ul>
3	<b>TESTING INSTRUMENTS PROFILE</b> <ul style="list-style-type: none"> <li>• <b>PMI Machine</b></li> <li>• <b>UT machine - Krautkramer USM 36</b></li> <li>• <b>Eleco Meter</b>, Thickness Gauge, Surface Profile Gauge, Paint DFT Gauge</li> <li>• <b>Parker MPI Test Equipment</b></li> <li>• Master Level</li> <li>• Laser Distance Checking Machine</li> <li>• Magnetic Dial Gauge with Indicator</li> <li>• Precision Square Level</li> <li>• Vacuum Testers for Steel Tank</li> <li>• Torque Wrenches, Heavy and Medium Duty</li> <li>• Pneumatic Bolt Torque Machine</li> <li>• Hydraulic Nut Cutter</li> <li>• Hydraulic Jack (1Ton, 2Ton, 10Ton, 50Ton, 100Ton)</li> <li>• Meager Fluke</li> <li>• Multi Meter</li> <li>• Vernier Caliper Digital &amp; Manual</li> <li>• Hydrotest Pump 300 Bar</li> <li>• Genie Process Calibrator</li> </ul>
4	<b>PROJECT EQUIPMENT PROFILE</b> <ul style="list-style-type: none"> <li>• <b>Total Station</b></li> <li>• <b>3Axis Laser Leveling Machine</b></li> <li>• Level Instrument</li> <li>• Chain Levers, 1,2,3,5,10 Ton Capacity</li> </ul>

## SUPPLEMENTARY INFORMATION

The Management and its technical experts had raised HATCO gradually and assumed a higher level of capability and technical know-how to undertake various projects dealing in works, Mechanical, Electrical & Instrumentation, HVAC, Civil works, , Steel Structural Fabrication, Erection jobs and. Likewise, HATCO deals with companies in their needs for short form projects, such as SABIC Affiliates, QURAYYAH Power Plant, MARAFIQ (Yanbu) , Saudi Iron & Steel Co.(HADEED) Mada Nonwovens (Al Rajhi Holding Company), Arrar Power Plant, CHEMANOL, Derma bit Waterproofing Industries (DWI),United Gulf Steel Mills, SADARA, SASREF and BeeA'h (Insinuator Plant III), Jubail 3B Ro Desalination Plant.

HATCO has employed a group of technical manpower who are well-experienced and competent in their respective field of construction endeavors. The Engineers down the line to the skilled workers have been in different companies for several years in the Kingdom to gain the experience and needed know-how.

With all the experience of the engineers and the skilled workers who are presently employed with HATCO, we can guarantee, that we can do any type of Fabrication work, either vertical or horizontal as per the standard required with Quality and at the right time as per schedule.

We have an adequate pool of equipment at the disposal of our well-trained Operators, to perform at the job sites, backed up by well-organized manpower to ensure the efficient completion of the project at the right time.

Our site personnel and office staff are provided with adequate transportation and communication equipment to assure instant accessibility and mobility to ensure the unhampered flow of coordination and efficient performance of the job.



## Health, Safety & Environmental Policy Statement

HUSAIN HADI ATWAH GENERAL CONTRACTING EST recognizes its Duty of Care and commits itself to the identification, management and control of any potential health and safety hazard that may affect employees or other interested parties within the company premises. HUSAIN HADI ATWAH GENERAL CONTRACTING EST also considers Environmental Management to be a high corporate priority.

HUSAIN HADI ATWAH GENERAL CONTRACTING EST will take a proactive approach towards creating safe working environments for all its employees and others involved in their work activities and will promote continued safety education and training for all employees, assigning responsibility for all aspects of Health Safety and Environment (HSE) Policy, continuously reviewing potential areas of improvement and ensuring through evaluation of all incidents.

HUSAIN HADI ATWAH GENERAL CONTRACTING EST will continue to address any potential environmental and/or health impacts of our operations by reducing waste, emissions and dischargers and by using energy efficiently.

HUSAIN HADI ATWAH GENERAL CONTRACTING EST will facilitate the implementation of the HSE Policy by having HSE training and competency in place. This HSE MS will encourage continual improvement of HSE performance through the definition of roles and responsibilities at all levels in the organization and an efficient communication structure. HATCO is fully committed to;

- Provide safe and healthy conditions and reduce injuries and illnesses to the lowest possible level. No task is so important and no service is so urgent that it cannot be done safely.
- Comply with local and international regulations, including other regulations to which HATCO is subscribed, provided for Occupational health and occupational safety, related to its operational activities.
- Provide information and training to the employees including, where applicable, contractors and protect employees from any health and safety hazards and their Risk arising from operations and events at the work place.
- Install and maintain facilities and equipment in accordance with recognized and accepted standards essential to reduce or prevent exposure to hazards by workmen, plant & equipment.

- Provide appropriate personal protective equipment to all employees at the Company expense when engineering controls are not adequate to minimize exposure to OH&S Hazard and related Risks.
- Provide medical services as required by law and as may be dictated by existing circumstances or programs.
- Establish, implement and maintain measurable objectives and targets program to ensure continual improvement of H&S Management System.
- Review H&S Policy periodically to ensure its adequacy and suitability and communicate this policy to all employees and interested parties. Maintain the best possible Health & Safety performance, and in order to achieve this Standard, prevent occupational injuries, illnesses, pollution and seek continual improvement



## PROJECTS & CLIENTS

### SABIC PROJECTS

**Plant Location: UNITED :**

**Installation of Fire Water Sprinkler System for CO2 Propane tank**

CO2 Plant - C-5089

- Piping fabrication, Supports, and Installation of sprinkler System (6", 4" 3", 2" , 1" lines)
- Installation of Deluge System
- Installation of Honeywell Local RISUO Panel and Termination of control and Power cables
- Instruments Installation and Cable laying.
- Fire Proofing Support.
- Commission Support

**Installation of Cathodic Protection System**

Ethylene - Cooling Water Pipe Line (CPR - 14 - 01)

EG2 - Reinstate of the cathodic protection system of EG-2 colling water pipeline

LAO - Cathodic Protection System Piles Foundation C-3610

- Excavation, fabrication and installation of Rectifier along with its Foundation
- Bore Hole Drilling; Size 10" Ø x 6M Depth. Along with anode installation
- Big Fink Installation, Installation of horizontal Anode, Junction Box and Termination
- 15 Horizontal Anodes (MMCT)
- 45 Vertical Anodes (drilling up to 10 meters deep)





## Plant Location : SHARQ

### Removal and Re-Installation of 363 Control valve and MOV

- Olefin TAM - 1" up to 42" size
- Isolation of the line, Blind Installation
- Isolation and disconnection of Electrical and Instrument power and control cables. --- Removal of Insulation
- Cold Cutting of Valve Assembly
- Removal and separation of Valves for transportation and overhauling
- Crane Used 500T, 300T, 100T
- Re-Installation of Valves and Torquing
- Lineup and Re-termination of Control and Power Cables
- Re-installation of New Insulation and Cladding.
- Startup Support.



## Plant Location: IBNSINA

### Major Overhauling of Air Preheater. (140HE5)

- MeOH TAM 60Ton Overall Weight
- Diameter 8.850 Meters
- Electrical and Lube oil Isolation .
- **Pin Rack Inspection** and Replacement with New Pin Rack
- Internal Seal Inspection and Replacement
- Axial Seal, Radial Seal, Bypass Seal, Inspection And Replacement with a New Gearbox Replacement
- Rotor Drive bearing replacement 23268 CAK/C3W33 Dia 620mm x 224
- On-site Rotor Balancing
- **Laser Alignment** of the Gearbox and the drive unit
- Startup Support.



A Pin Rack



## **Plant Location: HADEED**

### **Type of Works: Installation of New Hydrogen (H<sub>2</sub>) Generator**

Installation of new H<sub>2</sub> Generator unit at HADEED cold mill area.

Stainless Steel Tubing Works Supply, Fabrication & Installation of SS low pressure and high pressure tubing for interconnection of new H<sub>2</sub> unit & with plant piping.

Electrical job and instrumentation related to the new system.

## **Plant Location: SAUDI KAYAN**

### **Type of Works: Instrument & Electrical Cable Re Routing**

#### **Civil Work:**

Compaction, Compaction Test

Shuttering for Footing, rebar cutting & bending for footing & pedestal

Installation of Shuttering and Reinforcement Plus Concreate

Bitumen Coating of Footing with Pedestal

Backfilling & Compaction

#### **Mechanical:**

Steel Structure Fabrication

Erection of Steel Structure

#### **Electrical / Instrumentation**

Installation of Cable Tray

Cable Pulling

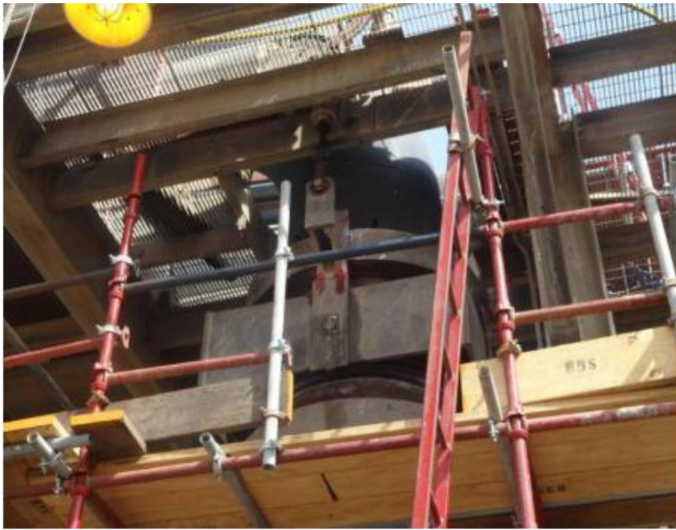
Cable Termination

Meggering, Loop Checking.

Testing Documentation Preparation.

## Plant Location: IBNSINA

### Type of Works Replacement of 9Nos. Expansion Joint (within 15 days)



▲ Replacement of Expansion Below Gimbaled Joint  
42"Ø HC Line SS Pipeline. (4<sup>th</sup> Floor)



▲ Replacement of 42"Ø Air Line CS Pipeline  
Assembly along with the Expansion Joint Below.  
(4<sup>th</sup> Floor)



◀ Replacement of 84"Ø Air Line SS Pipeline  
Assembly (Expansion Joint Assembly Weight: 3 tons).  
(Ground Floor)



▼ Replacement of 78"Ø Air Line SS Pipeline  
Assembly (Expansion Joint Assembly: 2.5 tons). (5<sup>th</sup>  
Floor)

## **QURAYYAH PLANT**

### **Type of Works: Installation of H2 Generator**

#### **Installation of Hydrogen Generator**

Leveling of foundation by plates.

Locate & Install foundation bolts as per requirements of new Generator.

Place & Secure the new Generator on the Foundation. Connect existing Gas, Water & Electrical power & control connections to new Generator.

Testing of pipe lines (Hydro test) & Electrical loop. Supply and fabrication of water coolant Inlet & Outlet Line with Valves. (1" CS)

Supply and fabrication, Installation of SS Tubing which is connected to Generator and existing piping

#### **Installation of Hydrogen Generator**

Disconnect all Flanges connecting to the Generator Skid

Loosen the Foundation bolts of the Generator

Lift the generator frame from foundation & deliver to the customer Ware house / Yard

Repair the foundation in case of cracks & prepare for installation of the Generator

Locate & Install foundation bolts as per requirements of new Generator

Place & Secure the new Generator on the Foundation. Connect existing Gas, Water & Electrical power & control connections to new Generator



## MARAFIQ, Yanbu (Replacement of Hydrogen Generator Plant)



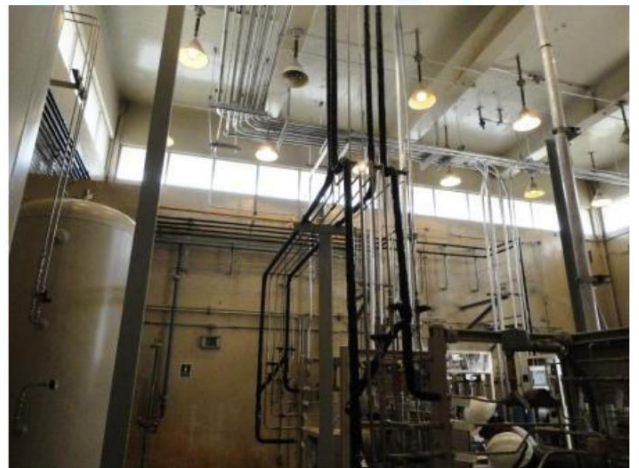
▲ Installation of Annunciator Panel Board

◀ Installation of Machines



▲ Instrumentation Works

Tubing for High Pressure Vessels ►



▲ Tubing, Insulation & Conduit Work



## SCECO - QURAYYAH POWER PLANT

### Type of Works: Replacement of Hydrogen Compressor at plant.

Dismantling & Installation of compressor (Hydrogen Compressor)

Dismantling of old H<sub>2</sub> compressor

Disconnect all flanges connecting to the compressor skid & that for the bypass valve.

List the compressor frame from foundation and deliver to the customer warehouse / yard.

High pressure and low pressure SS tubing.

Electrical and instrumentations work.

Locate & install foundation bolts as per the requirements of new compressor.

Connect existing gas, water & electrical power & control connections to new compressor.

Testing of pipe lines (Hydro) & Electrical loop.

Supply and Laying Electrical Cable

Radiography Testing (Including Transport & Arrangements)



## MADA Nonwovens (Plant Expansion)



Erection of Equipment's and Structural Steel that will serve as platform for the new machines

Control Panel Installation, termination testing and commissioning support



## ARAR POWER PLANT

### Type of Works: Installation of fuel treatment system

Dismantling works.

Existing treatment system

Dismantling of old pumping skid

Dismantling of old boiler unit

Dismantling of old control cabinets

Installation of new distillate treatment system

Mechanical Works.

Electrical & Instrumentation works.

Fabrication and installation of piping.

Supply and installation of 10-ton overhead chain pulley block with rails.

Firefighting safety system with sprinklers supply and installation of firefighting safety system, smoke detectors and fire alarm.

Common drain line with flexible hoses to be fabricated and connected for the new separator skid for all the drain points.

Testing and commissioning



## ARAR POWER PLANT (PIPING JOBS)



## CHEMANOL / METHANOL

### Type of Works:

Structural and pipe fabrication works

Plant Equipment Erections

Plant maintenance

Expansion work in factory

Various civil work like Foundation, dike walls, office room, land preparation.

Electrical & Instrumentations Works.

Office renovation works.

Site Development work

Asphalting works.

Water proofing works.



Installation of Cooling Tower Project - CHEMANOL



## DERMABIT (DWI)

### Type of Works:

Fabrication & installation of pre heater tanks.

Fabrication & installation of Stainless Steel Scrubber tanks.

Fabrication & installation of Cooling System & Storage tank

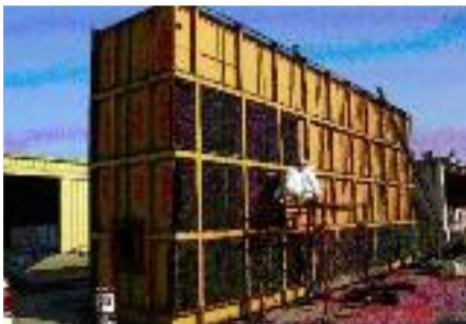
Fabrication of shredder machine foundation and erection.

Construction of dyke wall.

Fabrication and installation of hood for machine.

Fire water piping.

Fabrication and installation of boiler chiming.



Pre-Heater Tanks, Stainless Steel Scrubber  
Tanks Job & Storage Tanks - DWI

## DERMABIT (DWI)

Type of Works: Maintenance Job

DEMABIT (DWI)  
(Facility Maintenance)



HATCO



## UNITED GULF STEEL MILLS

### Type of Works:

Various types of mechanical & civil jobs like equipment foundations constructing.  
Construction of Control rooms  
Fire water pipe line works.  
Electrical works.  
Water proofing works  
Miscellaneous maintenance works.

## SWCC

### Type of Works: **Replacement of Bipolar Chlorination Cells.**

Remove all the piping connections connected to the cells.  
Unbolt the frame of the cells from the existing foundation.  
Remove the Frame and cell unit from the foundation using the overhead crane available in the location and using chain blocks  
After cells are removed and slide to transport point the same shall be taken to the SWCC workshop.  
Install the new cells.  
Hydro test for the cells.  
Install the cell in the existing foundation and proper alignment for the same will be done.  
Reinstate the existing pipes to the cell,

## EURO GULF CONSTRUCTION CHEMICALS CO. LTD.

### Type of Works:

Construction of Euro Gulf Admin Building, Canteen Building & Guard House.  
(Civil Works, Electrical Works, Plumbing Works, Fire Water piping, HVAC,  
Site Portable Water System)

Installation of property line boundary wall / fencing at project site.

Provided Deputy Site Supervisor for Euro Gulf.

Supply, Fabrication & Erection for Resin plant.

Supply, Fabrication & Installation for Air compressor in the plant.

Maintaining the ware house area of Euro Gulf (Cleaning Painting, Column &  
purling)

Painting of Admix plant shed structure, platform structure and storage tanks.

Assembly of horizontal monorail (Boom) for the jib crane in the plant.

Laying & termination of power cable in the plant.

Testing & Commissioning of Jib Cranes.

Supply & installation of Airline from Air compressor to Lab & Plant.

Modification of Admix Plant platform.

Installation of Fume Extraction System in the plant.



Euro Gulf Admin Building  
(While under construction)

Euro Gulf Admin Building  
(Finished Front Evaluation)



Euro Gulf Admin Building (Finished Interior)



## HVAC - Projects:

### MARAFIQ SWRO in SADARA Complex

Installation of Duct, insulation and Cladding

Aromatics MCC Building and Operator Building in SADARA Complex  
Installation of Duct, insulation and Cladding

Fire Training Center and PVC Building in PETROKEMYA

Fabrication & Supply of Duct and Support Installation of Duct, insulation,  
Cladding, Testing and Commissioning

Mess Hall in SASREF

Fabrication & Supply of Duct and Support Installation of Duct, insulation,  
Cladding, Testing and Commissioning



## SADARA COMPLEX:

Fabrication & Supply of Duct and Support  
Installation of Duct, insulation and Cladding



Aromatics MCC Building in SADARA Complex.

## BeeA'h -

### 1) Bag house replacement including Electrical & Instrumentation of Plant #2

Removal of Existing Cladding & Insulation.

Removal of individual components from Bottom Cone to Top Door.

Painting Jobs.

High temperature corrosion resistance coating to all gas contact surface.

Painting for New steel structure and other.

Scaffolding works.

Insulation and Aluminum cladding



Replacement of Baghouse including electrical & Instrumentation





Fabrication of Baghouse Panels



Erection of Hooper's



Out let duct connection



Bag house head Assly



Bag house head Assly



## 2) Hazardous Waste Incineration Facility Plant #3

Supply of all Materials

Fabrication of structural works, process tanks, baghouse, superstructure Pipe Racks, Piping Works

Assembly of Klin

Painting Jobs.

High temperature corrosion resistance coating to all gas contact surface.

Painting for New steel structure and other.

Erection of all equipment's, tanks, structural works at site.

Commissioning and Startup Activities.

Instruments onsite calibration and configuration.

MCC panel commissioning.







New Plant Erection in Progress.





Fabrication & Welding Kiln



Stack Pipe and Structure assembly and erection



Scrubber Tank and Structure  
Assembly and Erection





## OUR AFFILIATIONS

### 1. GULF FABRICATION FACTORY FOR INDUSTRY (GULFAB)

GULFAB, which specialized in Fabrication & Coating located at 3<sup>rd</sup> Support industrial area, Road No 112/106, in Royal Commission Jubail. ( <http://goo.gl/maps/tz55z> )

Solution for manufacturers of industrial maintenance, repair, operating and production. Our main intention is to become one of the leading Contracting Companies with well-experienced staff in the field of metal fabrication and any type of anchor bolts. We can provide our clients with a full range of value-added services and product



GULFAB FABRICATION SHOP







**Dish Head Forming – 9000mm dia 35 mm thick**



**Crown and Petal – HemiSpherical Dish Head**  
8300mm Dia  
30mm thick

**Crown and Petal – Hemispherical Dish Head**  
2500mm Dia  
55mm thick



**ID: 460**

**RF Pad. ID 460 and Thick 50mm**



**Crown and Petal – HemiSpherical Dish Head**  
MPI Test on the surface and bevel edges







CS & SS Pipe fabrication completed



Phase Separation Tank



FGE & AW tank dish fabrication



After Burner/Secondary Combusting Chamber fabrication



280mm Dia Rod Cut Pieces







Cooler Lower Part



Cooler Lower Part



Cooler Middle part



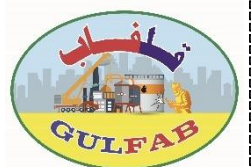
Shuttering Pier "Y" Shape



200m3 Water Storage tank



Emergency Vent Assembly Y







LIME SILO



PHASE SEPERATION TANK (SS316I)



BAG HOUSE



HOOPER



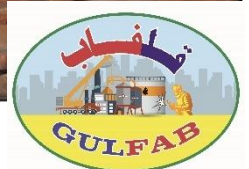
FGE & AW TANKS



INTERMEDIATE DUCTS



## Miscellaneous Items Fabrication









## COOLER FABRICATION AND ERECTION





## **2. SUPER INDUSTRIES ( Yanbu Branch)**

**(For Pump and Mechanical Seal**

Super Technical Factory for Industries (SUPER INDUSTRIES) is a HATCO Subsidiary group. SUPER has always strived to present the latest "Mechanical Seal Technology" at a very competitive Price and great Value Added Services.

SUPER INDUSTRIES manufacturing facility is based in Yanbu Industrial city and we introduce ourselves as a leading organization having more than three decades of experience in the field of designing and manufacturing of International Quality Mechanical Seals with Proven Performance Capability meeting the requirements of International Market.

SUPER's high quality oriented "Mechanical Seals" are suitably designed to fit into every Rotating Equipment like Pumps, Agitators, Mixers, Blowers Compressors etc. Catering the needs of virtually all segments of Industries such as Chemicals, Petrochemicals, Refineries, Fertilizers and power plants.

Our mechanical seals can handle most type of fluids like Acids, Chemicals, Hazardous Corrosive Slurries etc. operating under different temperature and pressure conditions. We have highly qualified and technically trained Engineers in Design & Development as well as Quality Control Department engaged in continuous development to ensure the best quality and to keep the system updated to meet the changing trends of the Global Market.

Our Company has a well-established Ultra-Modem Manufacturing Plant in Yanbu Industrial city and Jubail city to provide a continuous innovative product with Total Customer Satisfaction.

SUPER INDUSTRIES is having a full capability and long experience in servicing and manufacturing all types and brands of mechanical seals and all our services and products is equipped with a warranty.





## **SUPER INDUSTRIES**

PUMPS & MECHANICAL SEALS

**Yanbu Manufacturing Facility: SUPER INDUSTRIES, P.O. Box 5275, Yanbu  
Industrial City 46478 - KSA**

**Jubail Workshop Facility: HATCO WORKSHOP P.O. Box 1316, Jubail 31951 – KSA**

**Tel: +966547778660 / +966541319644**

**Email: [ahmed@superindustriesksa.com](mailto:ahmed@superindustriesksa.com) / [sales1@superindustriesksa.com](mailto:sales1@superindustriesksa.com)**





### 3. HUSAIN HADI ATWAH WORKSHOP (Jubail Branch) (For Mechanical Seals & Turnery) Super Mechanical Seal Pvt. Ltd.:

Super Mechanical Seal Pvt. Ltd. an ISO 9001:2000 certified company (Established in 1997) has always strived to present the latest “Seal Technology” at Unbelievable Prices and Great Value-added Services to the people we treasure the most like you.

We take this opportunity to introduce ourselves as a leading organization having two-and-half decades of experience in the field of designing and manufacturing International Quality Mechanical Seals with Proven Performance Capability meeting the requirements of both Domestic as well as International Markets.

SUPER’s high-quality oriented “Mechanical Seals” are suitably designed to fit into every Rotating Equipment like Pumps, Agitators, Mixers, Blowers Compressors etc. catering for the needs of virtually all segments of Industries such as- Chemicals, Fertilizers, Petrochemicals, Refineries, Power Stations, Solvent Extraction Plant

Textile & Sugar Industries, handling all kinds of fluids like Acids, Chemicals, Hazardous Corrosive Slurries etc. operating under different temperature and pressure conditions.

We have highly qualified and technically trained Engineers in Design & Development as well as Quality Control Department engaged in continuous development to ensure the best quality and

Our Company has a well-established Ultra-Modern Manufacturing Plant at Navi Mumbai having 12000 Sq. Ft. operational areas with enough spare capacity for enormous future expansion and to provide a continuous innovative product with Total Customer Satisfaction.

We now look forward to our mutually beneficial Business Association to cater for your existing and future requirements of Quality Concept Mechanical Seals and look ahead to get ourselves enlisted in your Approved Vendor List.









HATCO

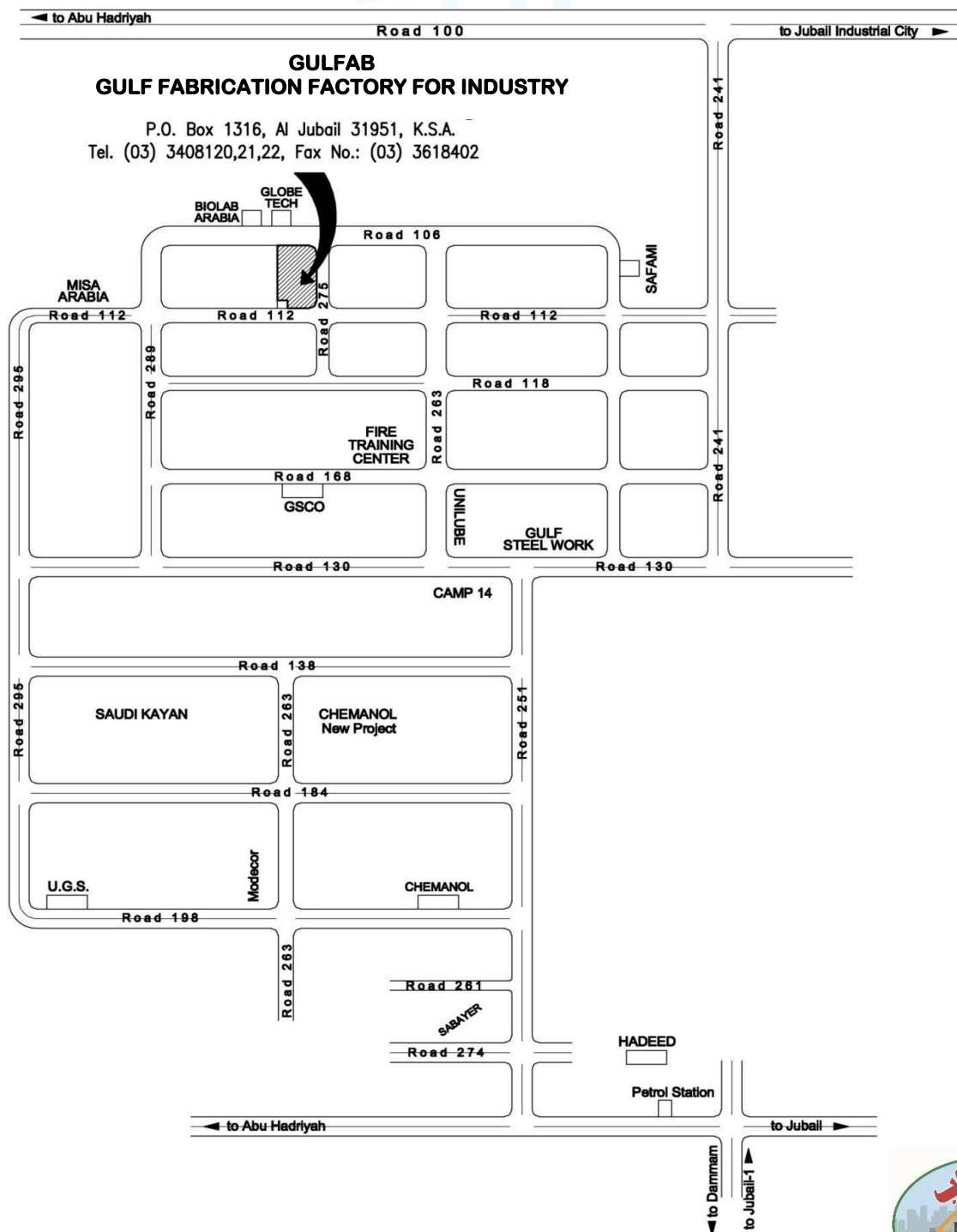




## GULFAB - Facility Location



<https://maps.app.goo.gl/35iwpiJoUpuVTFK48>



<http://goo.gl/maps/mE26M>

